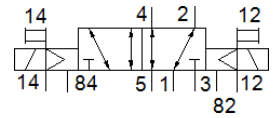


solenoid valve

VUVS-L30-B52-ZD-G38-F8-1C1

Part number: 575612

FESTO



Data sheet

Feature	Value
Valve function	5/2 bistable
Type of actuation	electrical
Valve size	31 mm
Standard nominal flow rate	2,300 l/min
Operating pressure	-0.9 ... 10 bar
Design structure	Piston slide
Authorisation	c UL us - Recognized (OL)
Protection class	IP65 with plug socket to IEC 60529
Nominal size	9.4 mm
Exhaust-air function	throttleable
Sealing principle	soft
Assembly position	Any
Manual override	detenting Pushing
Type of piloting	Piloted
Pilot air supply	external
Flow direction	reversible
Overlap	Positive overlap
Pilot pressure	1.5 ... 10 bar
b value	0.4
C value	9.9 l/sbar
Switching time reversal	13 ms
Duty cycle	100 %
Max. positive test pulse with logic 0	2,000 µs
Max. negative test pulse with logic 1	3,600 µs
Characteristic coil data	24 V DC: 3.3 W
Permissible voltage fluctuation	+/- 10 %
Operating medium	Compressed air in accordance with ISO8573-1:2010 [7:4:4]
Note on operating and pilot medium	Lubricated operation possible (subsequently required for further operation)
Vibration resistance	Transport application test at severity level 2 in accordance with FN 942017-4 and EN 60068-2-6
Shock resistance	Shock test with severity level 2 in accordance with FN 942017-5 and EN 60068-2-27
Corrosion resistance classification CRC	2 - Moderate corrosion stress
Medium temperature	-10 ... 60 °C
Pilot medium	Compressed air in accordance with ISO8573-1:2010 [7:4:4]
Ambient temperature	-10 ... 60 °C
Product weight	565 g
Electrical connection	Plug pattern type C to EN 175301-803
Mounting type	Optional on manifold rail with through hole
Scavenging orifice connection	Non-ducted

Feature	Value
Pilot exhaust port 82	M5
Pilot exhaust port 84	M5
Pilot air port 12	G1/8
Pilot air port 14	G1/8
Pneumatic connection, port 1	G3/8
Pneumatic connection, port 2	G3/8
Pneumatic connection, port 3	G3/8
Pneumatic connection, port 4	G3/8
Pneumatic connection, port 5	G3/8
Materials note	Conforms to RoHS
Material seals	HNBR NBR
Material housing	Aluminium die cast Painted
Material Piston slide	Wrought Aluminium alloy
Material screws	Steel, nickel-plated